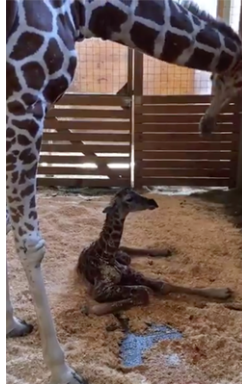


April's new calf



People all over the globe have been watching April, a pregnant giraffe in Harpursville, New York. The Animal Adventure Park has devised a live stream of her behavior using a recording cam in her enclosure. The live stream has been very popular and the mere mention of April the giraffe brings smiles to almost everyone that you speak to.

April's pregnancy seems to be taking longer than the 15 months that is the usual gestation period with giraffes. It is expected that April's calf will weigh about 150 pounds and be about 6 feet tall when it is born.

After 9 months, when human babies are born, they weigh around 7 pounds and are maybe 21 inches long. April's calf, will probably weight 150 pounds at birth, will grow to weigh between 1,800 to 2,600 pounds by the time that he/she is 4 years old. Female giraffes can grow to become 14 feet tall and male giraffes can be 18 feet tall. Wow, giraffes must grow really fast.

Female giraffes	≈14 feet tall	1,825 pounds
Male giraffes	≈18 feet tall	2,628 pounds
Average female human	≈ 63.4 inches tall	166 pounds
Average male human	≈ 69.3 inches tall	195 pounds

Human averages from <https://www.cdc.gov/nchs/fastats/body-measurements.htm>

1. How could you measure April's calf's growth so that you could compare it with a human rate of growth?
2. Make some comparisons.

By 4 to 6 years old a baby giraffe will reach its full adult size.

3. If you could mature to your adult size and weight in only 4 years (like a giraffe can), how much would you have to grow each year?
 - a. Weight
 - b. Height

