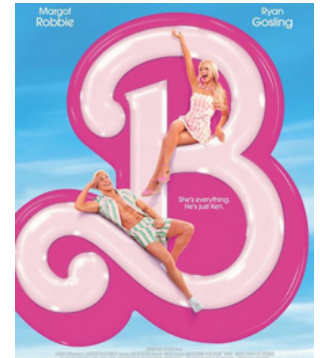


The Barbie movie has been a success! How does it compare to other high-earning movies?

1. Did you see it?
2. Did you like it?
3. Will it top all of the records?
4. Why do you suppose it is doing so well?



Movie	Release Date	Budget	Opening Weekend	Domestic Total Gross As of Sept 3, 2023	Worldwide Total Gross As of Sept 3, 2023
Barbie	7/21/2023	\$145,000,000	\$162,022,044	\$609,509,254	\$1,381,009,254

Avatar has been the top grossing movie since it first opened in 2009. We wondered if Barbie might overtake Avatar for that title.

Because of inflation we have to be careful about comparing the numbers of these two movies. A 2009 dollar was worth more than a dollar is worth now. So comparing 2009 dollars and 2023 dollars isn't going to be a valid comparison.

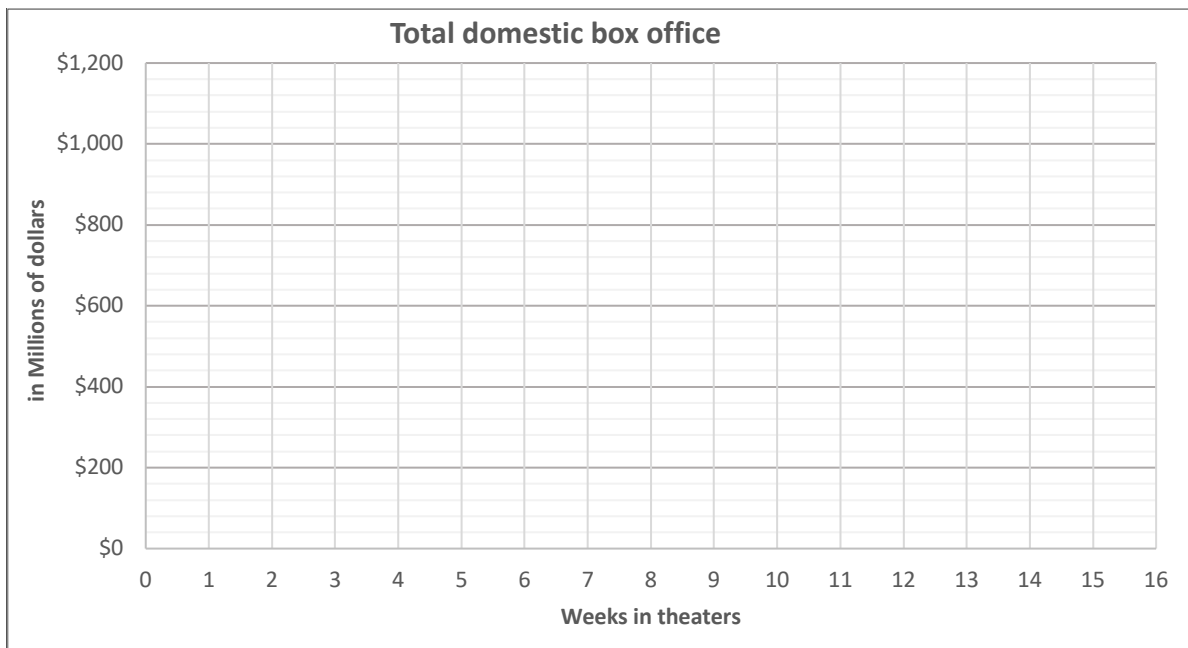
We found that \$1.00 in 2009 money is now worth \$1.4249. So, we had better use inflation adjusted data to look at Avatar's numbers.

5. If Avatar grossed about \$137 million dollars in its opening weekend in 2009, about what value would that money have in today's dollars?
6. How does it compare to Avatar, the all-time top selling movie?

	Avatar		Barbie	
	This one week	Running total	This one week	Running total
Opening Week	\$192,480,048	\$192,480,048	\$258,402,851	\$258,402,851
2nd Week	\$205,728,343	\$398,208,391	\$147,978,562	\$406,381,413
3rd Week	\$136,070,186	\$534,278,577	\$86,227,481	\$492,608,894
4th Week	\$98,177,098	\$632,455,675	\$53,173,971	\$545,782,865
5th Week	\$93,127,900	\$725,583,575	\$31,918,377	\$577,701,242
6th Week	\$66,935,656	\$792,519,231	\$21,183,012	\$598,884,254
7th Week	\$58,997,394	\$851,516,625		
8th Week	\$43,681,711	\$895,198,337		
9th Week	\$47,898,163	\$943,096,500		
10th Week	\$29,741,831	\$972,838,331		
11th Week	\$27,496,705	\$1,000,335,036		
12th Week	\$15,801,571	\$1,016,136,607		
13th Week	\$12,828,250	\$1,028,964,857		
14th Week	\$7,738,991	\$1,036,703,848		
15th Week	\$4,154,977	\$1,040,858,824		
16th Week	\$2,094,604	\$1,042,953,428		
17th Week	\$1,651,288	\$1,044,604,716		
18th Week	\$1,999,970	\$1,046,604,686		
19th Week	\$1,705,051	\$1,048,309,737		
20th Week	\$1,210,210	\$1,049,519,947		

It might be easier to compare these two movies with an appropriate graph.

7. What kind of graph do you think might show a good comparison?
8. Create a graph to help you compare these two changing quantities?



9. Now what might you conclude?

Sources: <https://www.boxofficemojo.com/>
[Avatar: The-Numbers.com](#)
[Comparison: The Numbers](#)